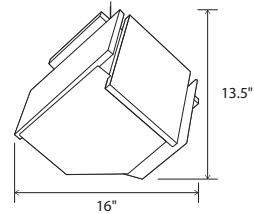




The Mica is simply a cube, which has been carefully deconstructed to a sculptural state. By way of the fixture's orientation and petal material composition, it exudes a certain organic symmetry. The Mica accent pendant acts as a beautiful node, creating a sense of space marked with an ambient glow.

Nick Sheridan,
Designer

Mica L pendant



Dimensions: 16" Ø, 13.5"
Materials: solid wood, polymer
Product weight: 8 lb
Suitable for a sloped ceiling

Integrated LED Specifications

Light output: 1250 Lumens (source)
Light color: 2700 K or 3500 K
Color accuracy: 90+ CRI
Power usage: 13 W
Dimmable (see driver below)
Brushed aluminum (CM-006) extended-profile square canopy with white braided cord included
Canopy dimensions: 4.5" x 4.5", 1.8"
Canopy required to house LED driver (3.3" x 1.6" x 1.0")
See website for more canopy information
6'-0" drop length, field adjustable

Medium Base Specifications

Lamping: E26 base, type A lamp, 60 W max
Bulb not included
Input voltage: 250 V AC max
White (CM-060) low-profile round canopy with clear SVT cord included
Canopy dimensions: 5.5"Ø, 0.3"
72" drop length, field adjustable

Wood grain will vary
Specifications subject to change

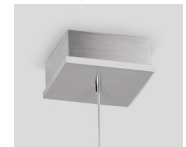
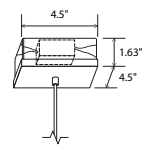


MATERIAL & FINISH OPTIONS

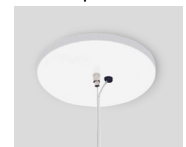
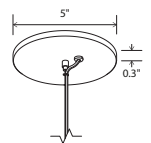
Mica L part # 06-180-	
Wood Body	
walnut (CM-001)	W
dark stained walnut (CM-002)	D
Lamping*	
2700 K LED	27
3500 K LED	35
medium base E26 socket	MB
Driver	
120 V AC input voltage	P1
TRIAC, ELV, or 0-10 V dimmable	

Includes: frosted polymer (CM-024)

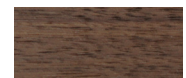
*Available in 3000K, 4000K and other color temperatures upon request



Mica L Integrated LED: extended-profile square canopy w/clear braided cord



Mica L E26: low-profile round canopy with white SPT cord and steel cable



walnut (CM-001)



dark stained walnut (CM-002)

